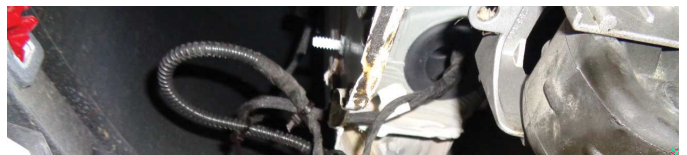
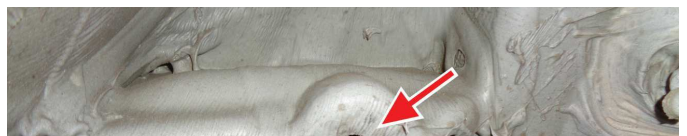


RAGAZZON[®]

**HIGH PERFORMANCE
STAINLESS STEEL EXHAUSTS**



Per la marmitta sul lato di sinistra fissare la staffa sotto la
cassa della vettura;



RAGAZZON®

**HIGH PERFORMANCE
STAINLESS STEEL EXHAUSTS**



Fig. 5



 Agganciare lo scarico utilizzando il gommino;


Fig. 5

205mm

